

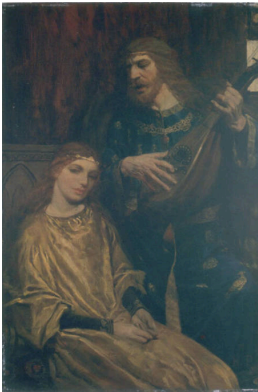
Basic Report

Title: Castle Captive
Date: 1904
Primary Maker: Howard Pyle
Medium: Oil on canvas

Title: In an Instant Those Long Fingers Closed on the Governor, for "Manasseh," by Percival Gibbon in Harper's Monthly Magazine (September 1908)
Date: 1908
Primary Maker: Howard Pyle
Medium: Oil on canvas

Title: It was his Belief the Chest Was Certainly Haunted, for "The Mysterious Chest," by Howard Pyle in Harper's Monthly Magazine (December 1908)
Date: 1908
Primary Maker: Howard Pyle
Medium: Oil vignette on academic board

Title: Rehoboth Beach
Primary Maker: Howard Pyle
Medium: Oil on canvas, mounted on hardboard



Title: Then Sang Sire Edward, for "The Rat-Trap," by James Branch Cabell in Harper's Monthly Magazine (December 1907)
Date: 1907
Primary Maker: Howard Pyle
Medium: Oil on canvas, mounted on hardboard

Title: Untitled Illustration [Four men at bottom of stairs; head of man at top of stairs looking down], for "The Mysterious Chest," by Howard Pyle in Harper's Monthly Magazine (December 1908)
Date: 1908
Primary Maker: Howard Pyle
Medium: Oil vignette on academic board